

SIMPLEX covers

Enclosure versions

New **SELF-CLOSING** covers ensure IP65 protection rating (according to EN 60529) when mated and locked with the closing lever, or IP44 protection rating when not mated and not locked with lever.

Characteristics of materials used:

- › Made of die cast aluminium alloy.
- › With epoxy-polyester powder coating.
- › Gaskets in anti-aging, oil-resistant, grease-resistant and fuel-resistant vinyl nitrile elastomer.
- › Locking device in stainless steel.
- › Covers in self-extinguishing thermoplastic material reinforced with glass fibres, UL approved.

Houseable inserts.

The enclosures series can be used with inserts:

- › CD 40, 64 poles
- › CT, CTS (10A) 40, 64 poles
- › CDD 24, 42, 72, 108 poles
- › CDS 9, 18, 27, 42 poles
- › CQE 10, 18, 32, 46 poles
- › CQEE 40, 64 poles
- › CSH 6, 10, 16, 24 poles
- › CCE 6, 10, 16, 24 poles
- › CNE, CSE 6, 10, 16, 24 poles
- › CSS 6, 10, 16, 24 poles
- › CT, CTE, CTSE (16A) 6, 10, 16, 24 poles
- › CMCE 3+2 (aux), 6+2 (aux), 10+2 (aux) poles
- › CME 3+2 (aux), 6+2 (aux) poles
- › CMSH 3+2 (aux), 6+2 (aux), 10+2 (aux) poles
- › CP 6 poles
- › CX 8/24, 6/36, 12/2, 4/0, 4/2, 4/8 poles
- › MIXO frame 2, 3, 4, 6 modules.

SELF-CLOSING





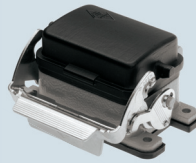
inserts:		page:
CDD	24 poles + ⊕	59 *
CQE	10 poles + ⊕	80 *
CSH	6 poles + ⊕	88 *
CCE	6 poles + ⊕	94 *
CNE, CSE	6 poles + ⊕	95 and 106 *
CSS	6 poles + ⊕	118 *
CT, CTE, CTSE (16A)	6 poles + ⊕	126 and 130 *
MIXO	2 modules	156-195 *
CDS	9 poles + ⊕	6 **

* refer to catalogue page CN.12
 ** refer to catalogue page CDS

insert centre distance:
 44 x 27 mm

bulkhead mounting housings with single lever

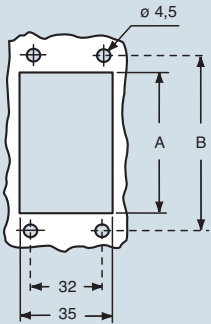
lever in stainless steel



**AVAILABLE
 END 2015**

description	part No.
with lever and cover in plastic, size "44.27"	CVI 06 LSP

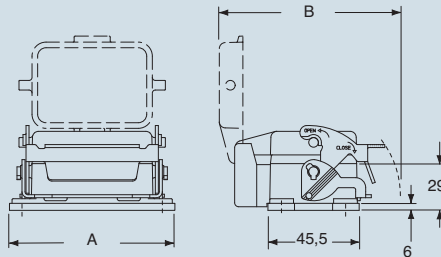
panel cut-out for bulkhead mounting housings in mm



type	A	B
CVI 06 LSP	52	70

dimensions in mm

CVI LSP



type	A	B
CVI 06 LSP	82,5	90

NB:
 The enclosures ensure IP65 protection rating when mated and locked with the closing lever, or IP44 protection when not mated and locked with lever.



dimensions shown are not binding and may be changed without notice



inserts:		page:
CDD	42 poles + ⊕	61 *
CQE	18 poles + ⊕	81 *
CQEE	18 poles + ⊕	81 ***
CSH	10 poles + ⊕	98 *
CCE	10 poles + ⊕	96 *
CNE, CSE	10 poles + ⊕	97 and 107 *
CSS	10 poles + ⊕	119 *
CT, CTE, CTSE (16A) ..	10 poles + ⊕	127 and 131 *
CMCE	3+2 (aux) poles + ⊕	134 *
CME	3+2 (aux) poles + ⊕	135 *
CMSH	3+2 (aux) poles + ⊕	28
CX	8/24 poles + ⊕	151 *
MIXO	3 modules	156-195 *
CDS	18 poles + ⊕	7 **

* refer to catalogue page CN.12
 ** refer to catalogue page CDS

insert centre distance: 57 x 27 mm

bulkhead mounting housings with single lever

lever in stainless steel



**AVAILABLE
 END 2015**

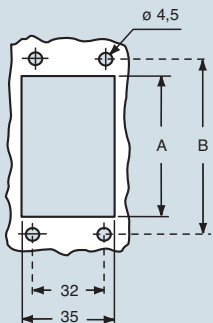
description	part No.
-------------	----------

with lever and cover in plastic, size "57.27"

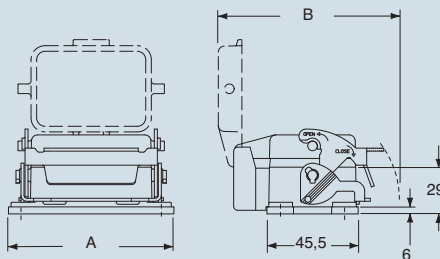
CVI 10 LSP

panel cut-out for bulkhead mounting housings in mm

dimensions in mm



CVI LSP



type	A	B
CVI 10 LSP	65	83

type	A	B
CVI 10 LSP	95,5	90

NB:
 The enclosures ensure IP65 protection rating when mated and locked with the closing lever, or IP44 protection when not mated and locked with lever.



dimensions shown are not binding and may be changed without notice



inserts:		page:
CD	40 poles + ⊕	49 *
CT, CTS *) (10A)	40 poles + ⊕	56 *
CDD	72 poles + ⊕	62 *
CQE	32 poles + ⊕	82 *
CSH	16 poles + ⊕	90 *
CCE	16 poles + ⊕	98 *
CNE, CSE	16 poles + ⊕	99 and 108 *
CSS	16 poles + ⊕	120 *
CT, CTE, CTSE (16A) ..	16 poles + ⊕	128 and 132 *
CMCE, CME 6+2 (aux) ..	poles + ⊕	136-137 *
CMSH	6+2 (aux) poles + ⊕	29
CP	6 poles + ⊕	149 *
CX	6/36 and 12/2 poles + ⊕	152-153 *
CX	4/0 and 4/2 poles + ⊕	154 *
MIXO	4 modules	156-195 *
CDS	27 poles + ⊕	8 **
CQEE	40 poles + ⊕	15 ***

*) can be used only in bulkhead mounting housings

* refer to catalogue page CN.12

** refer to catalogue page CDS

** refer to catalogue page Supplement October 2013

insert centre distance: 77,5 x 27 mm

bulkhead mounting housings with single lever

lever in stainless steel



**AVAILABLE
END 2015**

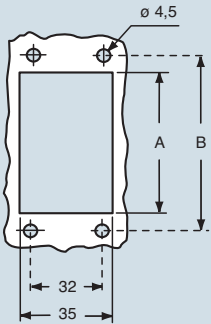
description	part No.
-------------	----------

with lever and cover in plastic, size "77.27"

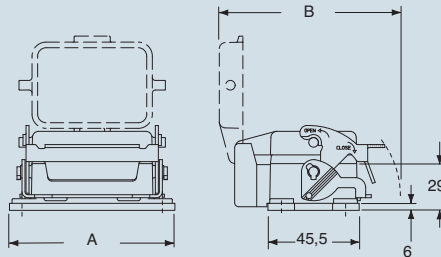
CVI 16 LSP

panel cut-out for bulkhead mounting housings in mm

dimensions in mm



CVI LSP



type	A	B
CVI 16 LSP	86	103

type	A	B
CVI 16 LSP	115,5	90

NB:
The enclosures ensure IP65 protection rating when mated and locked with the closing lever, or IP44 protection when not mated and locked with lever.



dimensions shown are not binding and may be changed without notice



inserts:		page:
CD	64 poles + ⊕	51 *
CT, CTS *) (10A)	64 poles + ⊕	57 *
CDD	108 poles + ⊕	64 *
CQE	46 poles + ⊕	83 *
CSH	24 poles + ⊕	91 *
CCE	24 poles + ⊕	100 *
CNE, CSE	24 poles + ⊕	101 and 109 *
CSS	24 poles + ⊕	121 *
CT, CTE, CTSE (16A) ..	24 poles + ⊕	129 and 133 *
CMCE	10+2 (aux) poles + ⊕	138 *
CMSH	10+2 (aux) poles + ⊕	30
CX	4/8 poles + ⊕	152-153 *
CX	4/0 and 4/2 poles + ⊕	155 *
MIXO	6 modules	156-195 *
CDS	42 poles + ⊕	9 **
CQEE	64 poles + ⊕	16 ***

*) can be used only in bulkhead mounting housings

* refer to catalogue page CN.12

** refer to catalogue page CDS

** refer to catalogue page Supplement October 2013

insert centre distance: 104 x 27 mm

bulkhead mounting housings with single lever

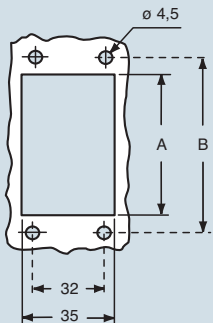
lever in stainless steel



AVAILABLE
END 2015

description	part No.
with lever and cover in plastic, size "104.27"	CVI 24 LSP

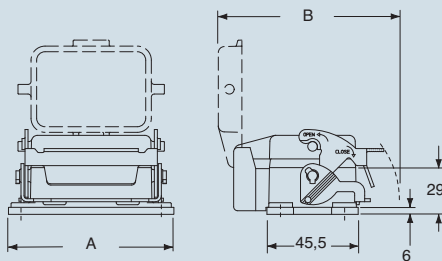
panel cut-out for bulkhead mounting housings in mm



type	A	B
CVI 24 LSP	112	130

dimensions in mm

CVI LSP



type	A	B
CVI 24 LSP	142,5	90

NB:
The enclosures ensure IP65 protection rating when mated and locked with the closing lever, or IP44 protection when not mated and locked with lever.



dimensions shown are not binding and may be changed without notice